

# **Programmable Power Remote Upgrade System Operation Manual**



**APM Technologies**

## 1. Software Description

This software is used to upgrade the software of the programmable power supply from the LAN communication port.

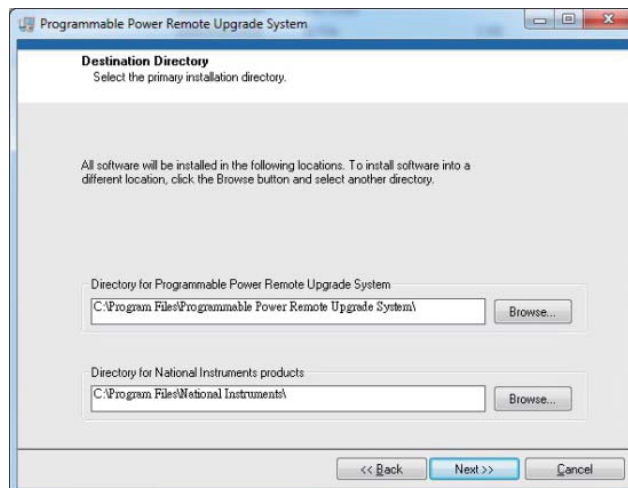
## 2. Device List

No.	Description	Remark	Qty
A	DC Power Supply	To be upgraded.	1
B	Program Code	The updated code from the customer service.	1
C	LAN Cable	To connect the power supply and PC when upgrade the code in STM32.	1
D	RS232 Cable	To connect the power supply and PC when upgrade the code in AVR.	1
E	PC	To remote control the power supply.	1

## 3. Software Installation and Uninstallation

Open Programmable Power Remote Upgrade System folder, and double click to install setup file.

Click the “Next” button to install the software follow the default location or you can change the location by click the “Browse” button and select another directory.

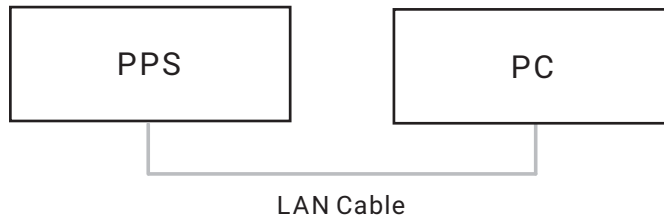


Then, always click the “Next” button to finish the software installation.

## 4. Upgrade Procedure

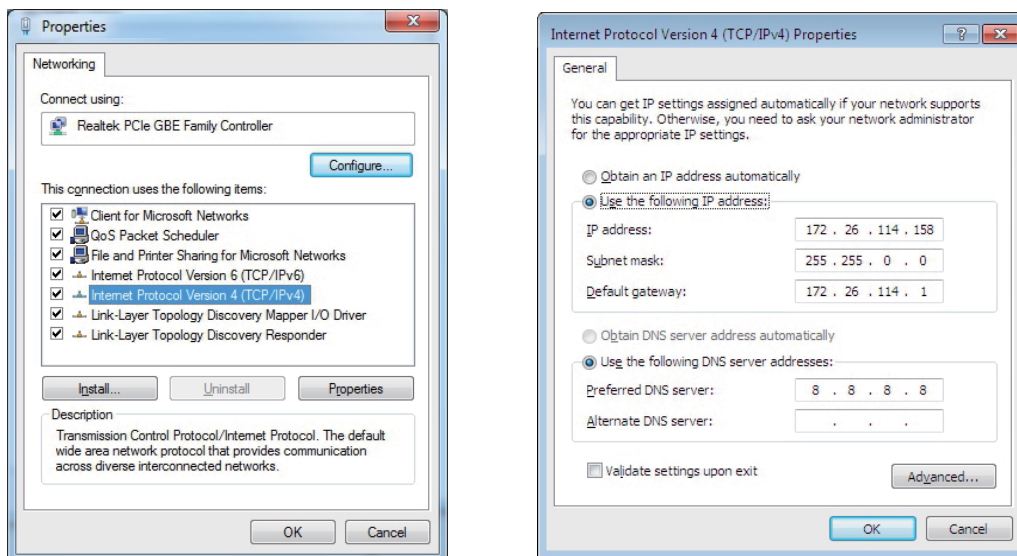
### 4.1 Upgrade for The Code in STM32

#### 4.1.1 Connection Introduction



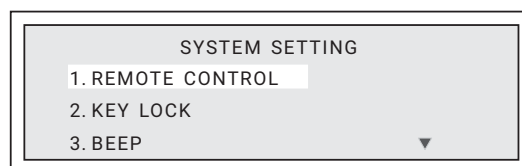
1> The default IP address of the power supply is 192.168.1.100.

2> Click to open the program “Open Network and Sharing Center” - “Local Area Connection” - “Properties” - choose “Internet Protocol Version 4 (TCP/IP)” to get the IP setting of the PC.

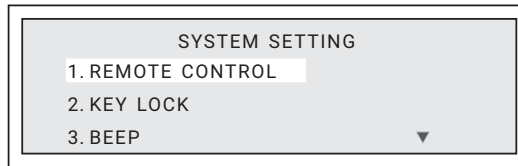


3> The way to change the ethernet setting of the power supply.

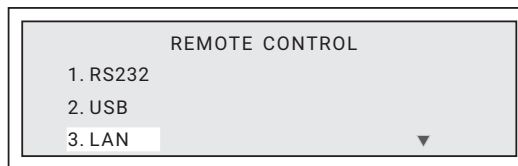
3-1> From the main display page press the [Menu] key to display the function menu.



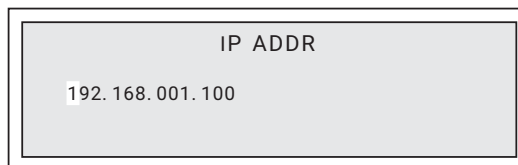
3-2> Highlight the REMOTE CONTROL item and press the [Enter] key to select.



3-3> Highlight the LAN item and press the [Enter] key to select.




3-4> Set the parameter by pressing the [0]~[9] and [Enter] keys.

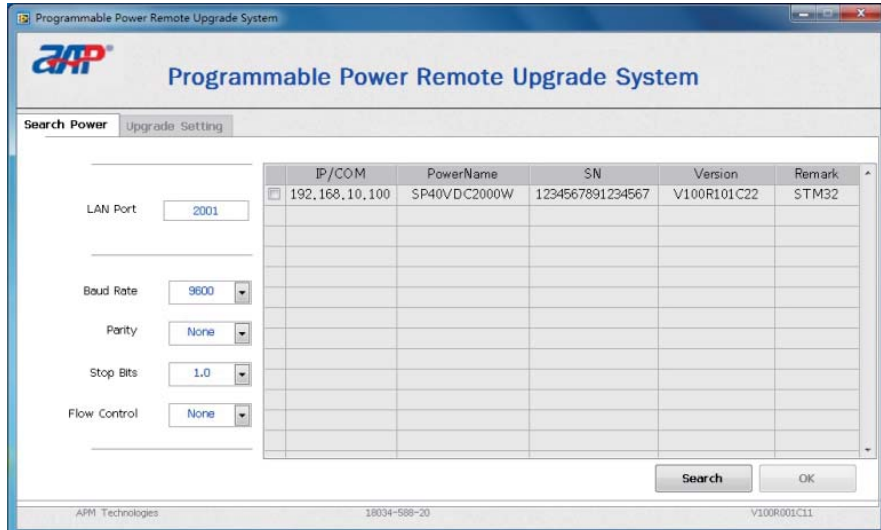


For example, in the current situation the IP ADDR should be 172.026.114.\*, and the \* can be chosen for the unit between 000 and 255. But make sure that the IP address of the unit should be different from any one in this local area network.

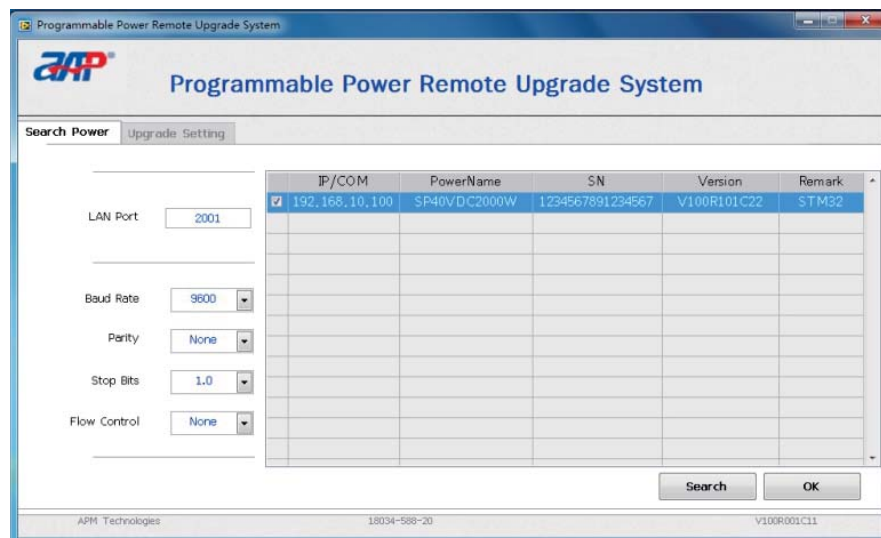
The MASK, GETAWAY parameters should be set as the same as that of the PC.


The default LAN Port is 2001.

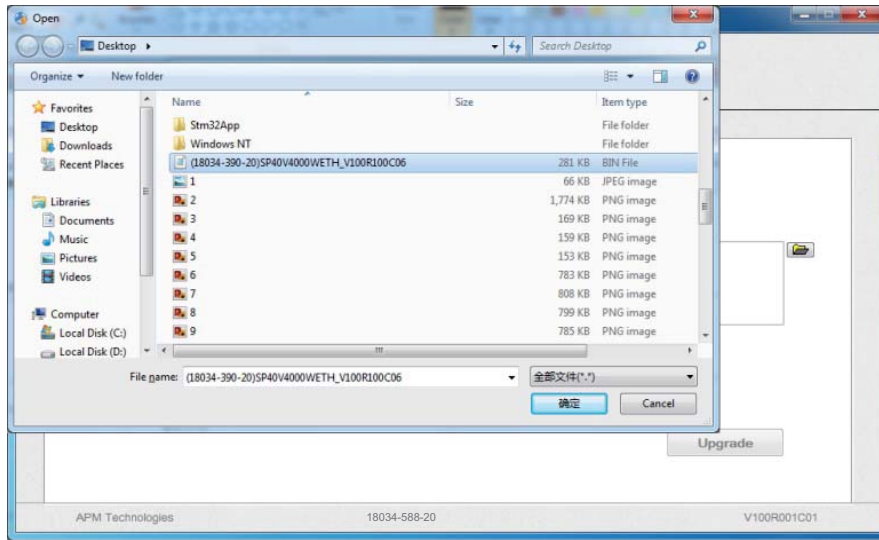
4> Double click the shortcut  to run the software and click on the “Search” button to search the power supply.



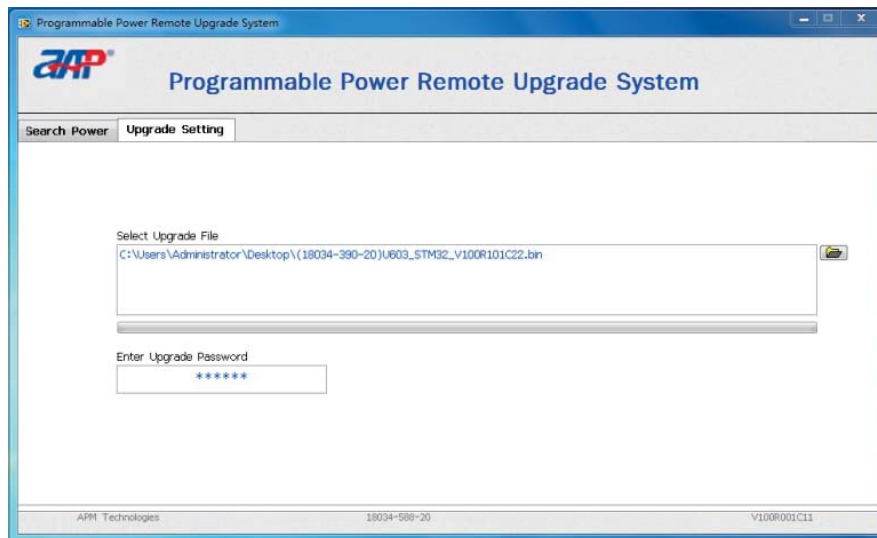
5> Check the power supply and click on the “OK” button to switch to the Upgrade Setting page



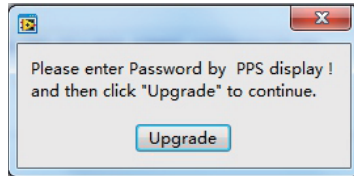
6> Click the  icon to select the location of the updated code.



7> Enter the upgrade password, APM123.

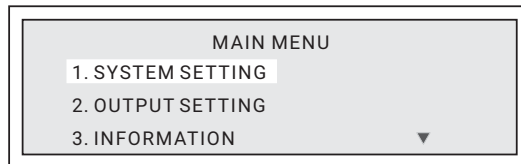


8> The below popup window will display after entering the password. Do not click the "Upgrade" button until step 9~12 has been finished.

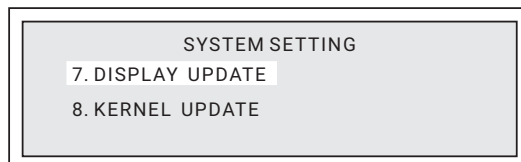


9> Press the decimal key on the front panel to switch power supply to local operation mode .

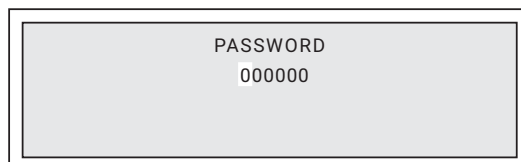
10> From the main display page press the [Menu] key to display the function menu. Highlight 1. SYSTEM SETTING item then press the [Enter] key to select.



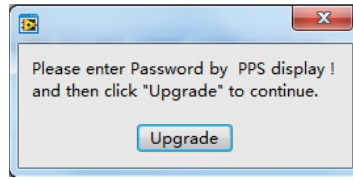
11> Press the [Down] key to display the following sub-menu. Highlight 7. DISPLAY UPDATE item then press the [Enter] key to select.



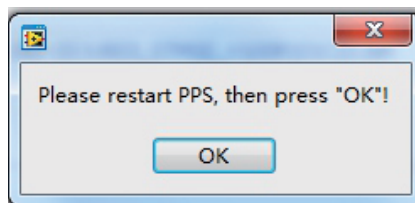
12> Press the [0]~[9] key and [Enter] key to enter the password, 702358.



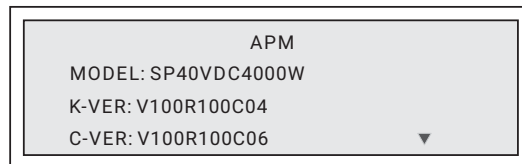
13> Then click on the “Upgrade” button, the code will be written into the power supply.



14> The popup window will display after the upgrade, then restart the power supply and click the “OK” button to finish the firmware update operation.



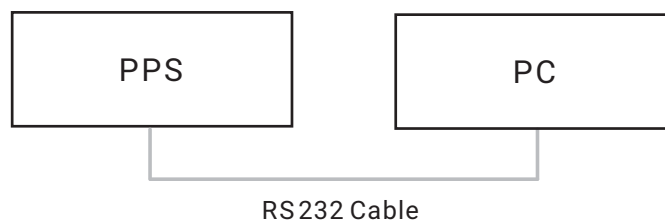
15> Highlight the 3.INFORMATION item, then press the [Enter] key to make sure the C-VER is upgraded to the new version.



Note: the power supply must be kept away from power failure during the whole upgrade process.

## 4.2 Upgrade for The Code in AVR

### 4.2.1 Connection Introduction

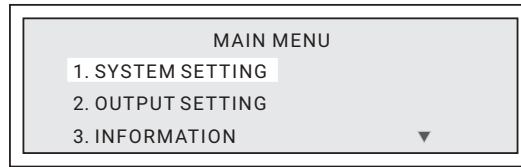




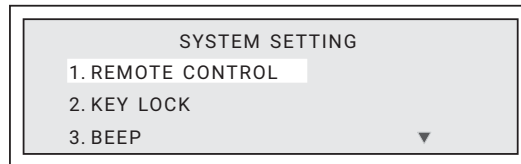
1> Connect the DC power supply to the PC via a RS232 cable.

2> The way to set the parameters of RS232 communication of the power supply.

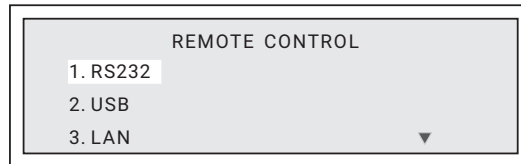
2-1> From the main display page press the [Menu] key to display the function menu.



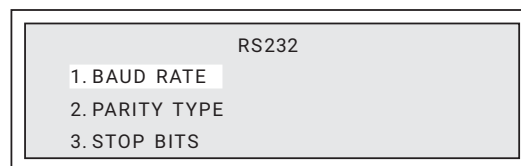
2-2> Highlight the REMOTE CONTROL item and press the [Enter] key to select.




2-3> Highlight the RS232 item and press the [Enter] key to select.

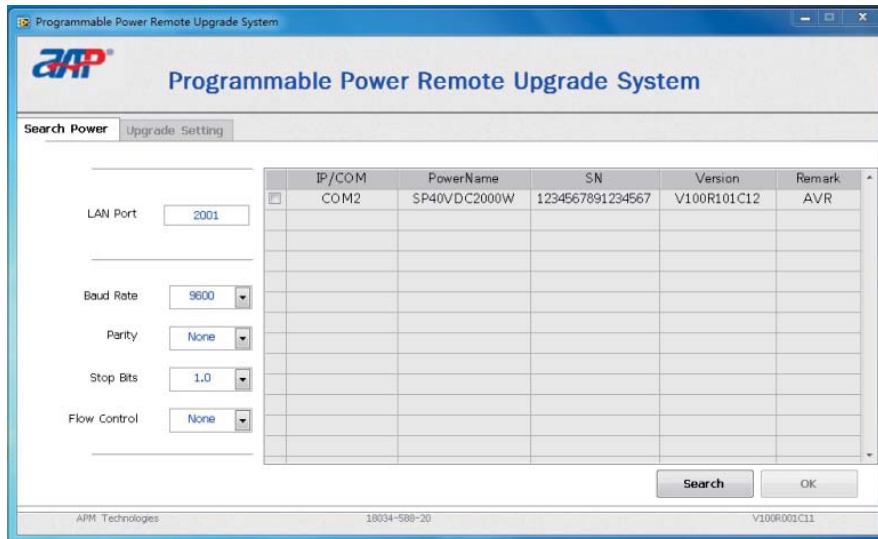


2-4> Set the parameter by pressing the [0]~[9] and [Enter] keys.




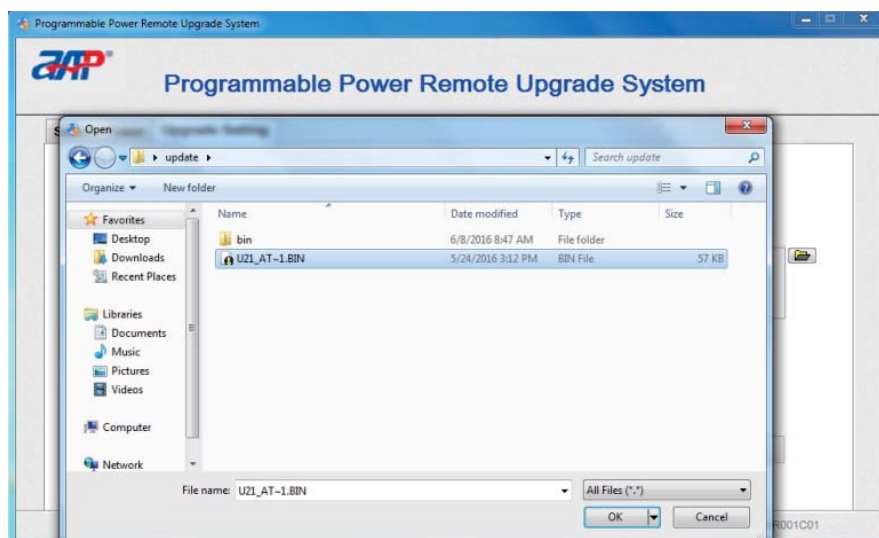
3> Double click the shortcut  to run the software and click on the “Search” button to search the power supply.

**Note:** the Buad Rate must be set as 9600, the Parity must be set as None, the Stop Bits must be set as 1.0, the Flow Control must be set as None.

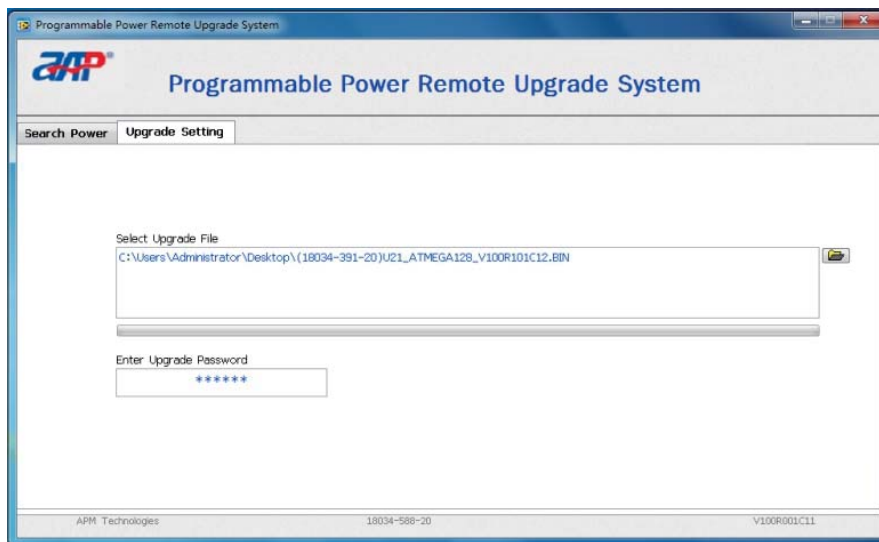


4> Check the power supply and click on the “OK” button to switch to the Upgrade Setting page.

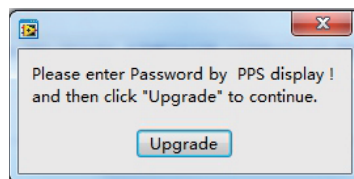
5> Click the  icon to select the location of the updated code.



6> Enter the upgrade password, APM123.

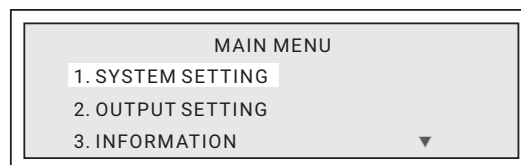


7> The below popup window will display after entering the password. Do not click the “Upgrade” button until step 8~11 has been finished.

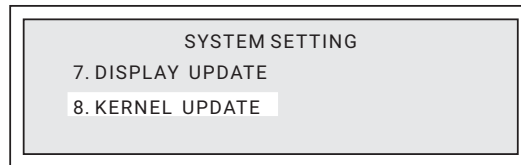


8> Press the decimal key on the front panel to switch power supply to local operation mode.

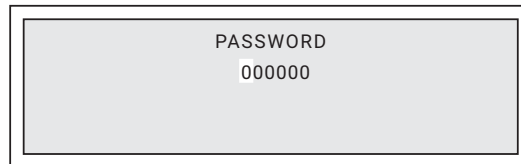
9> From the main display page press the [Menu] key to display the function menu. Highlight 1. SYSTEM SETTING item then press the [Enter] key to select.



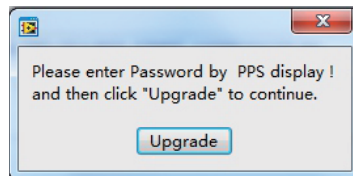
10> Press the [Down] key to display the following sub-menu. Highlight 8. KERNEL UPDATE item then press the [Enter] key to select.



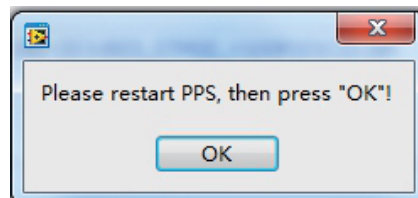
11> Press the [0]~[9] key and [Enter] key to enter the password, 702358.



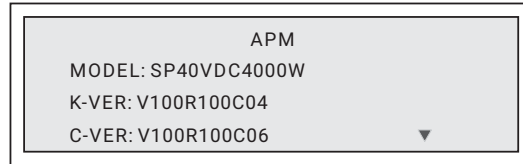
12> Then click on the "Upgrade" button, the code will be written into the power supply.



13> The following popup window will display after the upgrade, then restart the power supply and click the "OK" button to finish the firmware update operation.



14> Highlight the 3.INFORMATION item, then press the [Enter] key to make sure the K-VER is upgraded to the new version.



**Note:** the power supply must be kept away from power failure during the whole upgrade process.



Address: #7, Link Information Industry Park, Shuilianshan Road,  
Nancheng, Dongguan, Guangdong, China

Tel : +86-769 2202 8588

Fax : +86-769 2202 6771

E-mail : [overseas@apmtech.cn](mailto:overseas@apmtech.cn)

Web : [en.apmtech.cn](http://en.apmtech.cn)