

# Calibration Software for PPS Operation Manual

## 1. Software Description

APM Technologies' programmable DC power supply is a precision instrument. In order to ensure measurement accuracy it is recommended that a calibration check be performed on the power supply every year by using this software.

## 2. Device List

No.	Description	Remark	Qty
A	DC power supply	Inaccurate measurement of V, I.	1
B	RS232 Cable	To connect the power supply to the PC.	1
C	Voltage Meter	Used as a standard meter, e.g. 34410 or 6 1/2 voltage meter.	1
D	Current Meter	Used as a standard meter, e.g. WT210 or 6 1/2 current meter.	1
E	Load	Should be adjustable.	1
F	PC	To remote control the power supply.	1

## 3. Software Installation

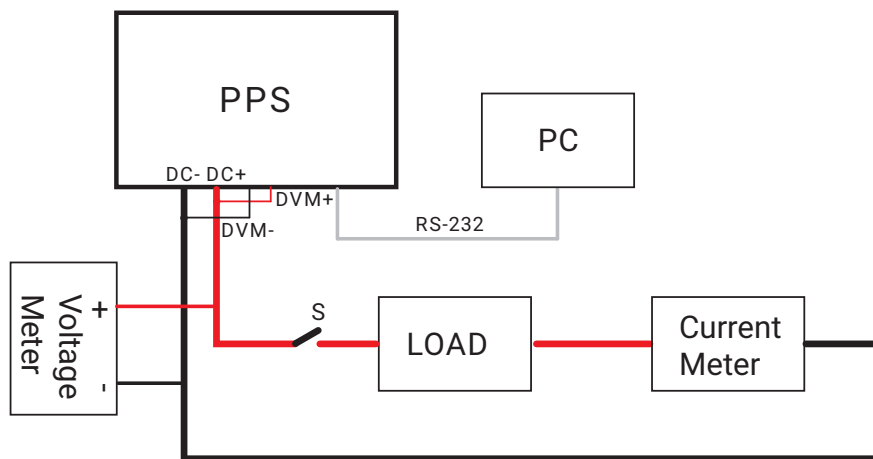
Install the setup file inside Calibration Software for PPS folder according to the installation instructions appear on the screen.

## 4. Calibration Procedure

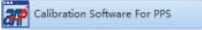
### 4.1 Calibration for The Setting and Measurement of Voltage

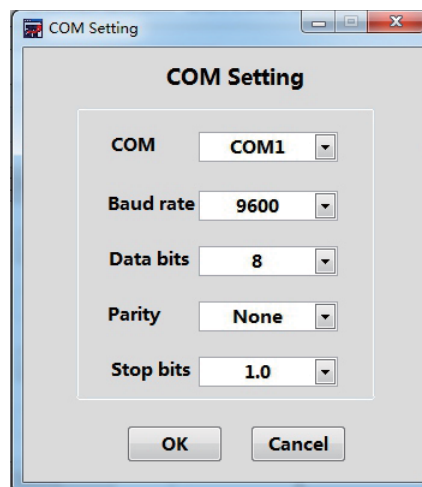
#### 4.1.1 Connection Introduction


- 1> Remove the load before calibrating (disconnect the switch S).
- 2> DVM+/- inputs are connected to the right polarity of the output of the power supply.
- 3> After wiring is complete, turn on the DC power supply and allow it to operate for a warm-up time of 30 minutes before calibration.

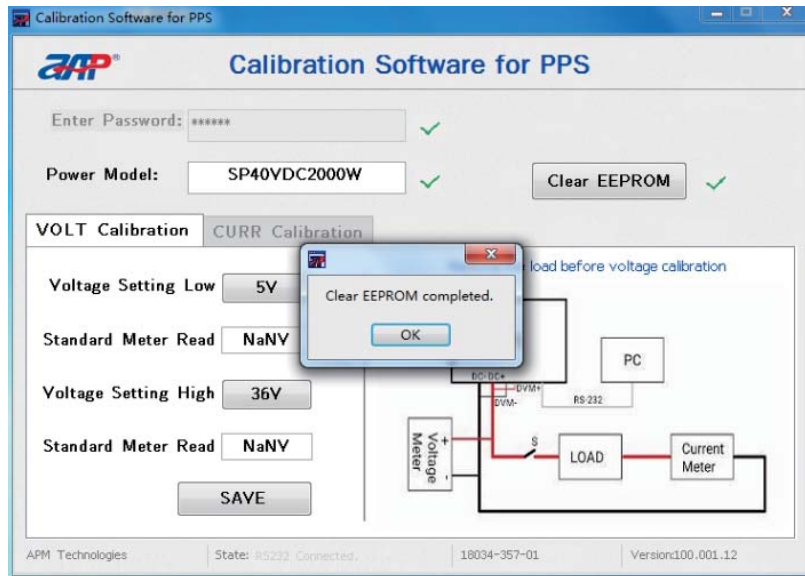


#### 4.1.2 Login to the software

- 1> To connect the RS-232 communication cable between the DC power supply and the PC.
- 2> Find  from "Start" list and click it.
- 3> The Baud rate, Data bits, Parity and Stop bits must be configured as the same as that of the DC power supply.



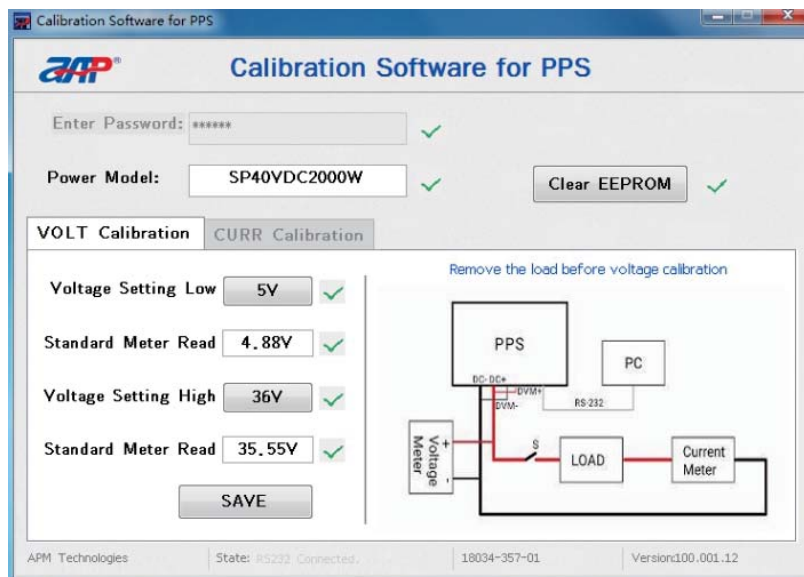
- 4> After entering the password "APM123", a icon  will appear then.
- 5> Manually enter the power model, not case-sensitive.
- 6> Click "Clear EEPROM" button to clear the old calibration value, and a floating window will appear on the interface, and click on the "OK" button to enter the VOLT Calibration sub-interface.



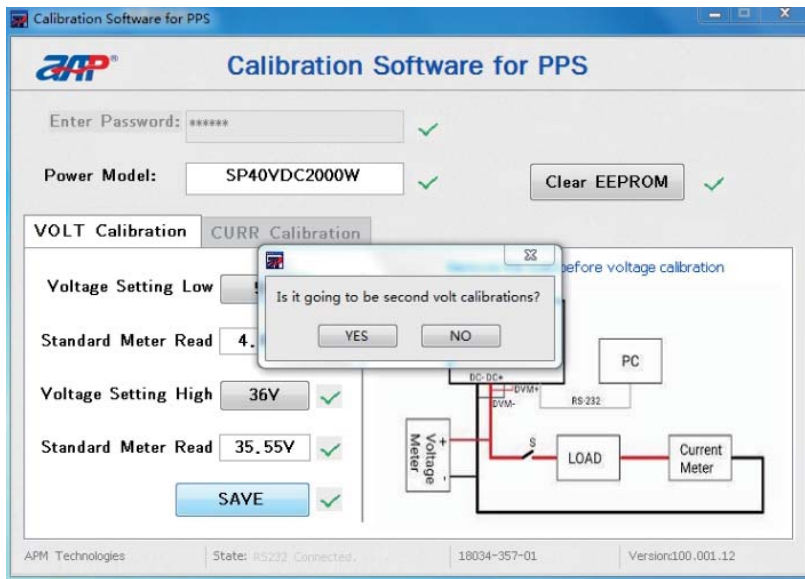
#### 4.1.3 Calibration Procedure

- 1> Click Voltage Setting Low calibration point 5V ;
- 2> Enter the voltage meter reading (4.88) to the Standard Meter Read box below;
- 3> Click Voltage Setting High calibration point 36V ;
- 4> Enter the voltage meter reading (35.55) to the Standard Meter Read box below;
- 5> Click SAVE button to save the calibration values;

Note: During VOLT Calibration process, the current limit of the power supply is set at 5A.

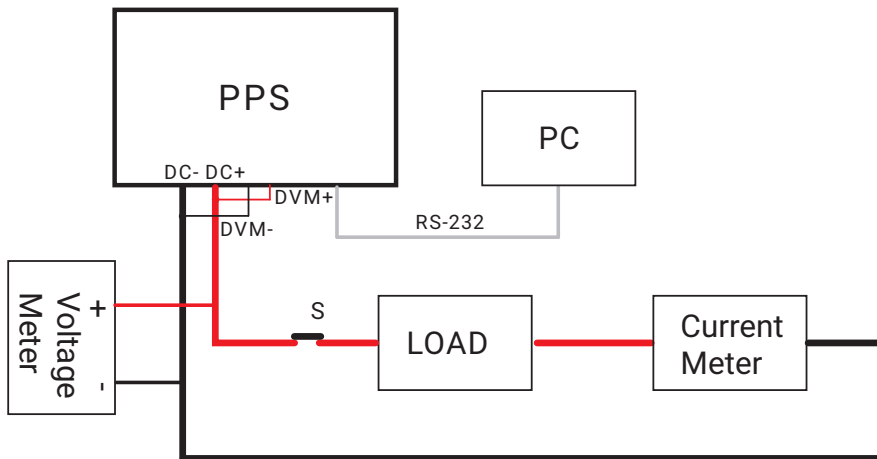


6> A small popup will come up, click YES to calibrate the voltage again, click NO to continue.



## 4.2 Calibration for The Setting and Measurement of Current

### 4.2.1 Connection Introduction

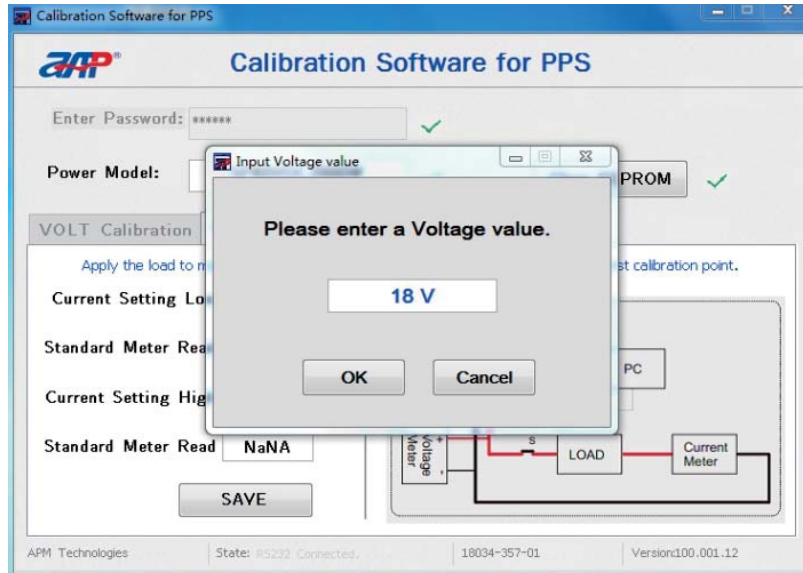


1> To connect load before calibrating and set the load according to the requirement.

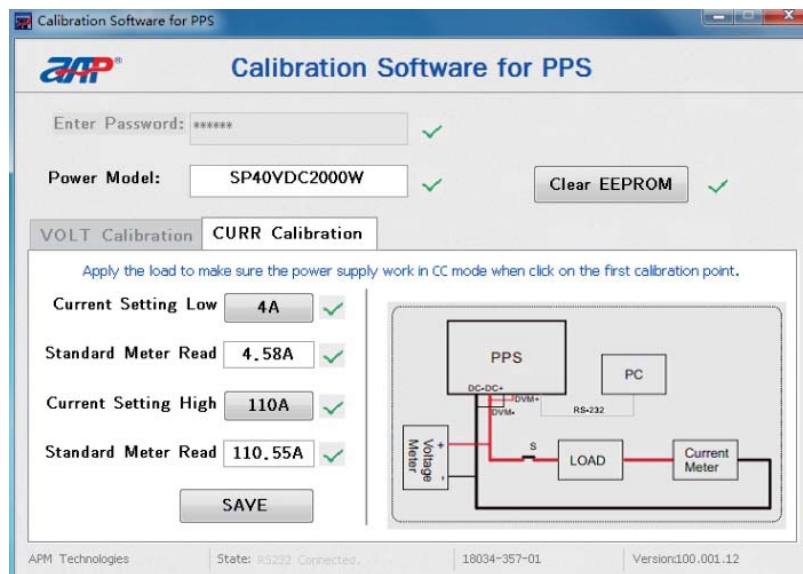
### 4.2.2 Calibration Procedure

- 1> Firstly, enter the voltage setting value of the power supply.\*
- 2> Turn on the load, and adjust the load to keep the power supply working in CC mode during the complete current calibration process.

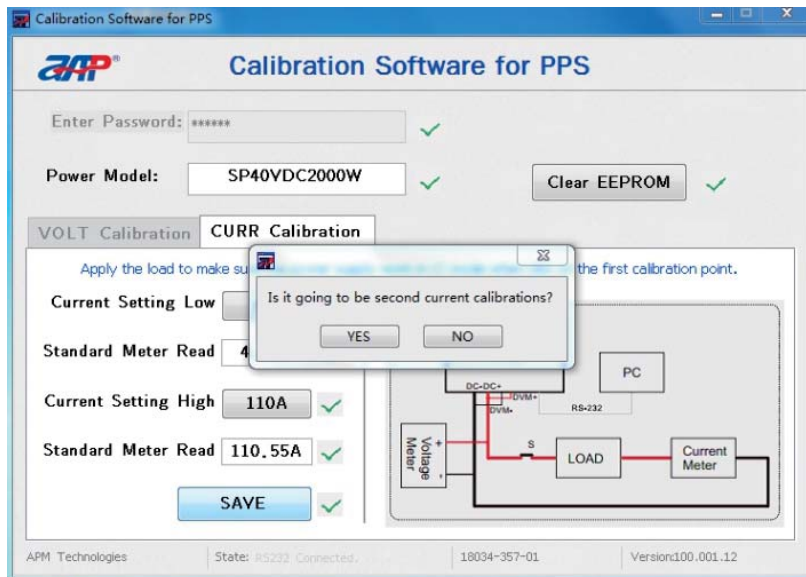
\* The value can be set according to the load voltage and the power range of the power supply.



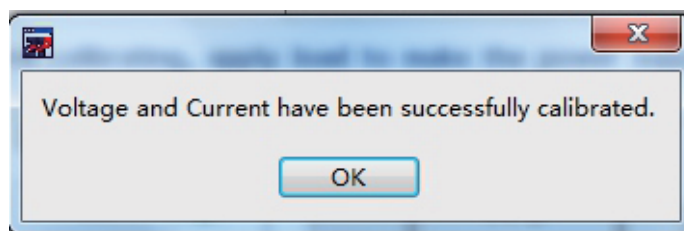
- 3> Click Current Setting Low calibration point 4A ;
- 4> Enter the current meter reading (4.58) to the Standard Meter Read box below;
- 5> Click Current Setting High calibration point 110A ;
- 6> Enter the current meter reading (110.55) to the Standard Meter Read box below;
- 7> Click SAVE button to save the calibration values.



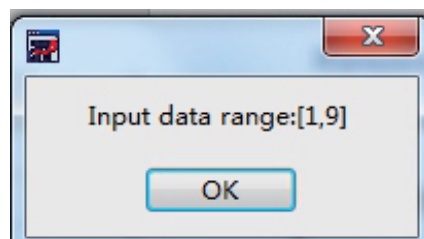
8> A small popup will come up, click YES to calibrate the current again, click NO to continue.




Click on the OK button to finish the calibration process.



To avoid the user's misoperation, we limit the Standard Meter Read value. If the value entered is over range, a popup window will display as below. Please ask the local agent or APM customer service for help.



After calibration please click on the  at the upper right corner to close the calibration software.



Address: #7, Link Information Industry Park, Shuilianshan Road,  
Nancheng, Dongguan, Guangdong, China

Tel : +86-769 2202 8588

Fax : +86-769 2202 6771

E-mail : [overseas@apmtech.cn](mailto:overseas@apmtech.cn)

Web : [en.apmtech.cn](http://en.apmtech.cn)